

CLEARLAKE OAKS COUNTY WATER DISTRICT

NOTICE OF A REGULAR MEETING OF THE BOARD OF DIRECTORS

Date: January 16, 2025

Time: 2:00 P.M.

*Clearlake Oaks County Water District - Administration Building
12952 E. Highway 20, Clearlake Oaks, CA 95423*

AGENDA

A. CALL TO ORDER

- Pledge of Allegiance
- Roll Call

- Mr. Stanley Archacki, President Mr. Michael Herman, Vice President Mr. James Burton, Director
- Mr. William McHugh, Director Mrs. Dianna Mann – General Manager, Mrs. Olivia Mann – Board Secretary
- Mr. Francisco Castro, Wastewater Mr. Kurt Jensen, Water, Mr. Jesse Seth, Operations Manager

B. PUBLIC COMMENT ON ITEMS NOT ON THE AGENDA

The public may comment on items not on the agenda within the Board’s jurisdiction. Speakers are limited to three (3) minutes each.

C. STAFF REPORTS (Page 3)

1. Administration
2. Chief Distribution Operator
3. Chief Water Plant Operator
4. Chief Wastewater Plant Operator
5. General Manager

D. COMMITTEE UPDATES

1. Offsite Effluent Storage
2. Administration Code

E. CONSENT ITEMS (Page 13)

The Board will be asked to approve all Consent Items at one time without discussion. If any Director, staff, or interested person requests that an item be removed from the Consent Items, it will be considered under New Business.

1. Financial Reports for review and approval

- a. December 2024 QB balance sheet and profit & loss statements
- b. Bank account balances and accounts receivable
- c. Employee payroll report
- d. Aged trial balance summary
- e. Vendor aging report, accounts payable breakdown

2. Minutes of the previous meeting for review and approval (Page 40)

- a. Minutes of Regular Meeting 12/19/2024

Action Taken: _____

F. NEW BUSINESS

- 1. Appointment of Arthur ‘Don’ Whittier

Action Taken: _____

- 2. Discussion and appointment of an Ad Hoc Committee to work with the County to allocate funding for fire hydrants

Action Taken: _____

- 3. Discussion and consideration of Resolution 25-01, Recognizing Samuel Boucher (Page 43)

Action Taken: _____

- 4. Discussion and consideration of NTU Technologies (Page 44)

Action Taken: _____

ADJOURNMENT

Time: _____

Where appropriate or deemed necessary, the Board may act on any item listed on the agenda, including items listed as information items. Public documents relating to any open session item listed on this agenda that are distributed to all or a majority of the members of the Board of Directors less than 72 hours before the meeting are available for public inspection in the customer service area of the District’s Administrative Office at the above address.

The public may address the Board concerning an agenda item during the Board’s consideration of that agenda item. The President will call for comments at the appropriate time. Comments of individual speakers are limited to three minutes per agenda item.

In compliance with the Americans with Disabilities Act, if you have a disability, and you need a disability-related modification or accommodation to participate in this meeting, then please contact Clearlake Oaks County Water District Secretary to the Board at 707-998-3322. Requests must be made as early as possible, and at least one full business day before the start of the meeting.

Clearlake Oaks County Water District

P.O. Box 709 / 12952 East Highway 20
 Clearlake Oaks, CA 95423
 (707) 998-3322 Phone (707) 998-1245 Fax
www.clocwd.org (Website)

January 10, 2025

Administration

- ∂ We received 0 water quality complaints (WQC).
- ∂ We received 0 consumer/appeal claim(s)
- ∂ There are 13 accounts on payment arrangements
- ∂ We are moving along with backflow testing, as of today, 869/952 devices have been tested.
 - We issued 88, 7-Day door hangers on 01/07/2025
 - Discontinuance for non-compliance will occur on 01/14/2025, no extensions will be given
 - Each year, we are working to perfect this new process, we learn something new each year and continue to advance our processing times & systems.
- ∂ Between transfer of ownerships and backflow testing, I am plenty busy on the billing side.
- ∂ UB4 is moving along nicely:
 - Our interface is set up, we have been able to login and get acclimated
 - CUSI is still working on our bill forms and notices, once these are complete, we will be able to go live with UB4
- ∂ With my time off at the end of December, I didn't have much time after the new year to work on the Admin Code for a meeting prior to our Regular Meeting, I will dive back into that next week.
- ∂ I have reached out to a handful of recommended companies who conduct Proposition 218 studies, we are still waiting to hear back from RCAC, the company who conducted our last study via grant. Otherwise, studies are starting at \$40,000.00+
- ∂ We have our IT kick off call on 01/14/2025, we have some things planned for this new coverage and are eager to get it set up!
- ∂ 4th quarter payroll reporting and EOY reporting will be done in the week of the meeting
- ∂ EOY overall closeout is about 95% done; including: Filing, Folders, Change Outs, Reporting, Deductions & more
- ∂ Hannah is taking on more as the weeks go on, she's been keeping us more than up to date with Docufree and still cleaning that whole platform up. She has recently taken on closing work orders, which doesn't seem like a loaded task, but done wrong, can have a domino effect. Our goal to be paperless is moving along nicely- We are still keeping up with the shredding per our retention policy; however, we (Hannah) is doing is in-house to save on cost. The shed appreciates the lighter load 😊

Olivia Mann

Olivia Mann
 Administrative Services Manager
 Board Secretary

Stanley Archacki
 President

Michael Herman
 Vice President

James Burton
 Director

William McHugh
 Director

VACANT
 Director

Aged Accounts Receivable

As of 01/13/2025

	1-30 Days	31-60 Days	61-90 Days	91-120 Days	<120 Days	Total Balance
	\$144,442.52	\$52,157.40	\$31,311.81	\$27,312.67	\$231,352.90	\$486,577.30
No. of Accounts:	1007	380	243	193	263	2086

These totals include all accounts on the Tax Roll

Water	\$153,163.40
Water Penalty	\$10,816.98
Sewer	\$159,686.11
Sewer Penalty	\$9,766.36
CRP Water	\$66,191.58
CRP Water Penalty	\$4,968.18
CRP Sewer	\$76,449.44
CRP Sewer Penalty	\$4,768.72
CRP PC	\$730.40
CRP PC Penalty	\$36.13
Total Balance:	\$486,577.30

****December Statements are due January 15, 2025****

Clearlake Oaks County Water District

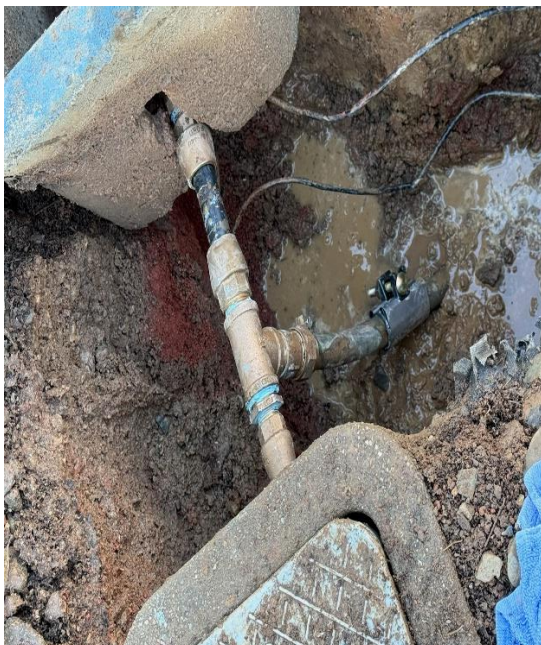
P.O. Box 709 / 12952 East Highway 20
Clearlake Oaks, CA 95423
(707) 998-3322 Phone (707) 998-1245 Fax
www.clocwd.org (Website)

January 13, 2025

RE: DC board letter,

Water distribution main, service lines and tank sites:

- We had 10 service line & leak repairs, also replaced a ¾” service line with 1”.
- Due to PGE planned outages we have been keeping generators on affected lift stations and Tank sites.
- Started setting up water tanks for auxiliary storage in front of Clearwell at water plant in hopes that it will also protect the Clearwell from cars going through the fence.
- On Konocti Dr Dc Crew eliminated an abandoned service line that was leaking and repaired the meter box cluster



New 1” Service line



Replaced meter box cluster on Konocti Dr

Sewer collections and Lift station sites:

- James and Jesse replaced the transducer at Lift station 10 and replaced some of the affected wiring.
- DC Crew pumped grease from all affected lift stations, and continue to add degreasing enzymes to help with grease buildup
- Chris and mike have continued working on landscaping and cleaning all the lift station sites including cleaning HVAC units at the plants and lift stations.

Sample station sites/Boil Water Notices, “BWN”:

- DC crew is still collecting the routine BacT samples every Wednesday. All routine sample reports have come back absent for total Coliforms and E. Coli.
- DC crew has been flushing every Wednesday at Paradise to help keep the residual CL2 at optimum levels.

DC staff updating:

- Jeremy - Chief - OP 3, Class B license.
- Jesse - Lead – OP 3, Class B license, Emergency response coordinator.
- Heaven – DC OP 2, Class B License, Safety coordinator.
- Chris – DC OP 2.
- Mike – Utility Tech.

Staff training: The staff participated in safety meetings lead by Heaven.

Jesse Seth
Clearlake Oaks County Water District
Operations Manager, Lead Operator.

Clearlake Oaks County Water District

P.O. Box 709 / 12952 East Highway 20
 Clearlake Oaks, CA 95423
 (707) 998-3322 Phone (707) 998-1245 Fax
www.clocwd.org (Website)

January 10, 2025

December 2024 Board Letter

- ◆ December – January raw water NTU from the pier intake is stable averaging 3-10. Ph running in the range of 7.7 – 9.1. Currently running off the West pier intake and filter 1.
- ◆ As of 1-7-25 the lake level is at 5.95, rising 2.63 ft in the last month due to the heavy rainstorm we had. The lake is also 2.63 ft higher than last year at this time
- ◆ Water production for the month of December was 16.338 MG down from 2023 production of 18.787 MG. Raw water intake was 18.296 MG. The daily production average dropped from 531,000 GPD in November to 527,000 GPD for December.
- ◆ We are having plant shutdowns with increasing frequency due to decreasing water demands.
- ◆ Treatment has been able to do the weekly tank runs for testing of chlorine residuals in all the tank locations.
- ◆ Continuing maintenance / cleanup through the plant area.
- ◆ Paradise tank has been recoated and is able to be refilled. We will begin filling, disinfecting and tested in January.
- ◆ Large sampling was conducted in December. See the attached list.

Treatment staff:

James Simons T4, D2 Operator Class B License
 Kurt Jensen T3, D2 Chief Class B License
 Helping treatment also
 Jesse Seth T2 D3 operator

Thank you,

Kurt Jensen

WTP Chief Plant Operator
 k.jensen@clocwd.org

Water Sample Testing

Sample Taken On	DATE	DATE	DATE	Month Due
Bacti R(BW) & CW (M)	12/4/24	1/8/25		Dec/ Jan
Bacti R (BW)	12/18/24			Dec
Bacti Tank Farm (once)				
R & CW TCP123 (BA)	3yr waiver			
Cyano Toxin Raw (Raw & Treated)				
Bromate (Q)	12/4/24			Dec
Perchlorate (A)				
TTHM (Q)	12/18/24			Dec
HAA5 (Q)	12/18/24			Dec
Lead & Copper (A)(1)				
Lead & Copper (A)(1)				
Lead & Copper (A)(1)				
TOC / ALK	12/17/24			Dec
Nitrate (A)				
Nitrite (A)				
Antimony (A)	12/17/24			Dec
Arsenic(A)	12/17/24			Dec
Barium(A)				
Beryllium(A)	12/17/24			Dec
Cadmium(A)	12/14/24			Dec
Chromium Total (A)	12/17/24			Dec
Fluoride Natural(A)	12/17/24			Dec
Mercury(A)	12/17/24			Dec
Nickel(A)	12/07/24			Dec
Selenium(A)	12/17/24			Dec
Thallium(A)	12/17/24			Dec
Simazine(A)	12/17/24			Dec
Bicarbonate Alaklinity(A)	12/17/24			Dec
Calcium(A)	12/17/24			Dec
Carbonate Alakalinity(A)	12/17/24			Dec
Chloride(A)	12/17/24			Dec
Copper(A)	12/17/24			Dec
Foaming Agents (MBAS)(A)				
Hardness Total as CaCO3(A)	12/17/24			Dec
Hydroxide Alakalinity(A)	12/17/24			Dec
Iron(A)	12/17/24			Dec
Magnesium(A)	12/17/24			Dec
Manganese(A)	12/17/24			Dec
PH, Laboratory(A)	12/17/24			Dec
Silver(A)	12/17/24			Dec
Sodium(A)	12/17/24			Dec
Specific Coductance(A)	12/17/24			Dec
Sulfate(A)	12/17/24			Dec

A = Annually
 Q = Quarterly
 M = Monthly
 W = Weekly

**Please note:
 December is a
 large sampling
 month there are
 many samples
 taken this month.
 *****All samples
 showing on the
 state web site will
 populate at the
 beginning of each
 month as due now.**

Total Dissolved Solids(A)	12/17/24			Dec	
Turbidity, Laboratory(A)	12/17/24			Dec	
Zinc(A)	12/17/24			Dec	
Aluminum(A)	12/17/24			Dec	
MTBE(A)	12/17/24			Dec	
Color / Odor	12/17/24			Dec	
Asbestos					semi annually
Thiobencarb(A)					
Ethylene Dibromide					Every 9 Years
Heptachlor					Every 9 Years
Heptachlor Epoxide					Every 9 Years
BHC-Gamma					Every 9 Years
Methoxychlor					Every 9 Years
Toxaphene					Every 9 Years
Clearwell VOC					
Reg SOC 504 EDB					
Bacti clearwell					
Regulated SOC 504					
Thiobencarb					
Hexavalent Chromium				April	
Gross Alpha				Nov	Every 9 years

Clearlake Oaks County Water District

P.O. Box 709 / 12952 East Highway 20
 Clearlake Oaks, CA 95423
 (707) 998-3322 Phone (707) 998-1245 Fax
www.clocwd.org (Website)

January 12, 2025

Clearlake Oaks County Water District
 P.O. Box 709
 Clearlake Oaks, CA 95423-0709

RE: December Board Letter

FLOWS FOR THE MONTH/CLEARLAKE LAKE LEVEL:

- ❖ **INFLUENT: 13.638 MG (AVERAGE: 440,000 GPD)**
- ❖ **EFFLUENT: 8.654 MG (AVERAGE: 394,000 GPD/273 GPM)**
- ❖ **CLEARLAKE AVERAGE LEVEL: 4.23' RUMSEY GAUGE**

As noted on the above flow data, the increase in number of gallons flowing into the waste plant has increased. It has increased close to double in comparison to last months. This is due to the amount of rainfall (6.50") that occurred for the month. This increased Clearlake level by 2' which as its normal I&I increases as well. Process at the plant has been good. All testing results have been in compliance the WDR.

On the 31st the actuator on the Auma valve was pulled so it can be shipped. The reason for this is the actuator is needed due to the specialized model in it (see pic. provided). This is the only way the fail-safe unit can be tested. Case Construction was out at the plant on the 23rd to assess the valve dig up and possibly install a vault that will give us access to the plug valve if any repair needs to be done. At this time the pad that was poured on top of the valve location needs to be removed to access the plug valve. Everything is pointing towards this being the issue. Currently, we are waiting for Case to respond regarding job start up.

Francisco Castro
CPO Wastewater Plant

Stanley Archacki
 President

Michael Herman
 Vice President

James Burton
 Director

William McHugh
 Director

VACANT
 Director



Stanley Archacki
President

Michael Herman
Vice President

James Burton
Director

William McHugh
Director

VACANT
Director

**Clearlake Oaks County Water District
Board of Directors
Board Meeting January 16, 2025**

Board of Directors,

Our auditor was here to perform the annual audit. We should have the report back sometime in February.

The month of December was relatively slow with most people taking time off during the holiday season.

I'm sure Olivia will touch a little on the backflow testing. After all the reminder letters that were sent out, we still have over 80 devices that have not been tested. Shut offs will be the week of the 14th with no extensions.

In addition, Olivia has been in contact with some companies to help with the 218 process. I had no idea how expensive it would be. I am hoping that RCAC still has the ability to receive grants for this process and can help us for little to no charge.

Jesse will now be moving on to become cross connection certified.

We are still waiting to hear back from Cal-Fire with a time they will remove the overgrowth from our emergency ponds.

We are now halfway through our budget year, and I am happy to say we are on a pretty good track except for a few unexpected expenses and of course utility costs. I will start prepping for the upcoming budget next month.

Here is to a happy 2025!

As always, a big thank you to the staff for a job well done.

Respectfully Submitted,
Dianna Mann
General Manager

11:20 AM

Clearlake Oaks County Water District

Summary Balance Sheet

01/09/25

As of December 31, 2024

Accrual Basis

	<u>Dec 31, 24</u>
ASSETS	
Current Assets	
Checking/Savings	1,000,254.53
Accounts Receivable	204,087.00
Other Current Assets	3,175,796.51
Total Current Assets	<u>4,380,138.04</u>
Fixed Assets	<u>22,878,668.99</u>
TOTAL ASSETS	<u>27,258,807.03</u>
LIABILITIES & EQUITY	
Liabilities	
Current Liabilities	
Accounts Payable	57,991.56
Credit Cards	2,108.63
Other Current Liabilities	8,354,147.60
Total Current Liabilities	<u>8,414,247.79</u>
Long Term Liabilities	<u>-973,084.43</u>
Total Liabilities	<u>7,441,163.36</u>
Equity	<u>19,817,643.67</u>
TOTAL LIABILITIES & EQUITY	<u>27,258,807.03</u>

11:23 AM

Clearlake Oaks County Water District

Balance Sheet

As of December 31, 2024

01/09/25

Accrual Basis

	Dec 31, 24
ASSETS	
Current Assets	
Checking/Savings	
101.5 · CA CRP PC (California Class)	129,357.47
101.4 · CA CRP Sewer (California Class)	130,618.13
101.3 · CA CRP Water (California Class)	155,787.00
101.2 · CA Sewer Reserves (California Class)	61,886.50
101.1 · CA Water Reserves (California Class)	151,272.65
102.001 · GL - 9122 (Old Acct. # 053420019)	46,610.70
101 · LAIF - CASH IN BANK (CASH IN BANK - LAIF - WAS 1013550)	
CIP Deposits 2014	189,000.00
101 · LAIF - CASH IN BANK (CASH IN BANK - LAIF - WAS 1013550) - ...	135,633.10
Total 101 · LAIF - CASH IN BANK (CASH IN BANK - LAIF - WAS 1013550)	324,633.10
102.01 · WEST AMERICA - REGULAR CHECKING (WEST AMERICA BA...	88.98
Total Checking/Savings	1,000,254.53
Accounts Receivable	
CUSI Accounts Receivable	204,087.00
Total Accounts Receivable	204,087.00
Other Current Assets	
139 · Docufree (Purchasing space on the Cloud xfering hard copies)	36,026.65
116 · DEFERRED OUTFLOW- PENSION	279,080.00
103 · PETTY CASH (PETTY CASH - WAS 1013200)	306.59
104 · COUNTY TREASURY (COUNTY TREASURY - WAS 1013201)	85,208.68
130 · Const In Progress - Studies	
130.97 · Const in Progress - Actiflo Pil (Actiflo Pilot Program)	3,280.00
130.96 · Const in Progress - WWP 2022 (Grant application for WWT...	5,585.00
130.95 · Source Capacity Studygrant prep	18,190.25
130 · Const In Progress - Studies - Other	691,882.44
Total 130 · Const In Progress - Studies	718,937.69
132 · CRP SEWER (CAPITOL IMPROVEMENTS - SEWER - WAS 1199200)	983,511.67
135 · CRP WATER (CAPITOL IMPROVEMENTS - WATER - WAS 1199100)	249,148.33
114 · ACCOUNTS RECEIVABLE. (ACCOUNTS RECEIVABLE - WAS 1097...	810,005.90
115 · PRE-PAID INSURANCE (PRE-PAID INSURANCE - WAS 1097840)	13,571.00
Total Other Current Assets	3,175,796.51
Total Current Assets	4,380,138.04
Fixed Assets	
136 · CUSI Software (All expenses related to billing software)	23,172.00
138 · USDA Water Improvements	8,461,059.57
128 · Sewer Infrstrcture & Rehab Proj (Phase 1 was the installation of the ...	3,890,219.87
121 · Wtr Dist & Wtr Storage Projects (Replacement or installation of wate...	
121.1 · Sidewalk Project - District Exp	115,500.66
121 · Wtr Dist & Wtr Storage Projects (Replacement or installation of w...	279,432.11
Total 121 · Wtr Dist & Wtr Storage Projects (Replacement or installation o...	394,932.77
131 · Waste Water Plant	
131.1 · Pumps/Equipment	178,099.54
131 · Waste Water Plant - Other	230,059.50
Total 131 · Waste Water Plant	408,159.04
126 · Forcemain (phase 1) Cap. Imprv.	1,233,797.22
123 · USDA - Sewer Plant Cap Imprvmt	4,265,559.43
USDA Project	-523,819.00
127 · Water Plant	
127.8 · Water Intake Pump Extension	-140,267.64
127.7 · Ozone System	38,629.36

11:23 AM

Clearlake Oaks County Water District

Balance Sheet

As of December 31, 2024

01/09/25

Accrual Basis

	Dec 31, 24
127.6 · Swan AMI Turbiwell Monitor	25,079.10
127.5 · A/C installation for Filter Rm	750.00
127.4 · PH System	9,959.72
127.2 · Harvy Vault Chlor Inject Proj	1,408.61
127.1 · Major Equipment	396,250.39
127 · Water Plant - Other	239,426.30
Total 127 · Water Plant	571,235.84
120 · District General CRP (EQUIPMENT - WAS 1011181)	
120.01 · General Equipment/Tools (GENERAL EQUIPMENT - WATER - ...	1,922,818.13
120.60 · Office (OFFICE EQUIPMENT - WAS 1011192)	27,331.49
120.75 · SCADA	54,364.30
120.90 · Vehicles/Generators/Trailers	934,882.14
120 · District General CRP (EQUIPMENT - WAS 1011181) - Other	95,883.57
Total 120 · District General CRP (EQUIPMENT - WAS 1011181)	3,035,279.63
122 · Bldgs/Grounds Cap Improvements	8,547,329.06
124 · D/C System Cap Improvements (COLLECTION SYSTEM - SEWER - ...	
124.2 · GIS Online Mapping System	8,277.92
124.30 · Lift Stations	
124.31 · Lift Station 7 Bypass	66,042.23
124.30 · Lift Stations - Other	60,599.80
Total 124.30 · Lift Stations	126,642.03
124.50 · Mains	14,788.58
124.60 · Meters	10,000.34
124.90 · Water Tanks	40,615.04
124 · D/C System Cap Improvements (COLLECTION SYSTEM - SEWER ...	3,150,613.27
Total 124 · D/C System Cap Improvements (COLLECTION SYSTEM - SEW...	3,350,937.18
125 · Land - Dist. Cap. Improvements	299,770.00
129 · ALLOW. FOR DEPRECIATION	-11,078,963.62
Total Fixed Assets	22,878,668.99
TOTAL ASSETS	27,258,807.03
LIABILITIES & EQUITY	
Liabilities	
Current Liabilities	
Accounts Payable	
200 · ACCOUNTS PAYABLE (ACCOUNTS PAYABLE - WAS 2097200)	57,991.56
Total Accounts Payable	57,991.56
Credit Cards	
8-81000 · Amazon Business Prime Card (American Express Amazon...	2,108.63
Total Credit Cards	2,108.63
Other Current Liabilities	
800 · Bulk Water Deposit	2,025.00
Annual Depreciation	249,035.55
224 · USDA Retainage	241,508.65
223.56 · FEDERAL PAYROLL TAX PENALTY (Failure to make a feder...	-3,928.96
280 · Loan	
280.20 · Crane Truck	-6,852.40
280.04 · 2021 Water Truck	38,279.97
280.15 · USDA Water Improvement Project (USDA Wtr Improve...	4,780,000.00
280.02 · KS State Bank - 2019 Vac-Con	-544.49
280.12 · USDA Loan for Sewer Clarifier	2,946,172.41
Total 280 · Loan	7,757,055.49
221 · Health Ins - EE Portion	10,611.89

11:23 AM

Clearlake Oaks County Water District

Balance Sheet

As of December 31, 2024

01/09/25

Accrual Basis

	Dec 31, 24
222 · Direct Deposit Liabilities (Direct Deposit Liabilities)	20,551.59
223.15 · GARNISHMENTS (GARNISHMENT MAIN - NEW GL)	
223.16 · GARNISHMENT - COURT DEBT ORDER (GARNISHMENT ...)	-134.76
223.17 · GARNISHMENT - LAKE CO SHERIFF (GARNISHMENT - L...)	23,356.51
223.15 · GARNISHMENTS (GARNISHMENT MAIN - NEW GL) - Other	-22,085.60
Total 223.15 · GARNISHMENTS (GARNISHMENT MAIN - NEW GL)	1,136.15
223.55 · FEDERAL PAYROLL TAX WITHHOLDING (FEDERAL PAYRO...	-1,050.73
223.65 · STATE DISABILITY PAYABLE (STATE DISABILITY PAYABL...	-1.00
223.75 · PAYROLL DEDUCTION - INS CO-PAY (PAYROLL DEDUCTI...	-25,206.47
223.80 · GASB 68 Pension (- WAS 2097190)	26,313.00
223.85 · MISC DEDUCTIONS PAYABLE (MISC DEDUCTIONS PAYAB...	8,934.90
223.90 · COMPENSATED EMPLOYEE BENEFITS (COMPENSATED E...	86,839.02
24000 · Payroll Liabilities (Unpaid payroll liabilities. Amounts withhe...	-19,676.48
Total Other Current Liabilities	8,354,147.60
Total Current Liabilities	8,414,247.79
Long Term Liabilities	
228 · FEMA Interest on Overpaymnt/Pen	743,915.57
227 · FEMA Overpayment/Penalties	-2,068,990.59
295 · NET PENSION LIABILITY	723,163.00
225 · USDA Payment - Sewer Clarifier	-371,172.41
Total Long Term Liabilities	-973,084.43
Total Liabilities	7,441,163.36
Equity	
302 · RETAINED EARNINGS (RETAINED EARNINGS - WAS 3030300)	3,334,114.80
304 · Opening Balance Equity (Opening balances during setup post to thi...	-584,283.24
306 · Retained Earnings - OLD (Undistributed earnings of the corporation ...	16,827,199.65
Net Income	240,612.46
Total Equity	19,817,643.67
TOTAL LIABILITIES & EQUITY	27,258,807.03

10:23 AM

Clearlake Oaks County Water District

Profit and Loss

01/09/25

July through December 2024

Accrual Basis

	Admin (GL)	Sewer (GL)	Water (GL)	Total GL	TOTAL
Ordinary Income/Expense					
Income					
Income					
445 · Bulk Water	0.00	0.00	4,475.40	4,475.40	4,475.40
410 · Client Reg Pmt	0.00	567,918.96	743,140.95	1,311,059.91	1,311,059.91
420 · Connection Fees	0.00	10,245.00	0.00	10,245.00	10,245.00
430 · Penalty & Interest	0.00	12,059.80	14,848.24	26,908.04	26,908.04
440 · Misc Revenue	0.00	1.64	1.64	3.28	3.28
450 · Other - Non S/W Rev	0.00	72,710.02	72,719.67	144,889.69	144,889.69
Total Income	0.00	662,395.42	835,185.90	1,497,581.32	1,497,581.32
Total Income	0.00	662,395.42	835,185.90	1,497,581.32	1,497,581.32
Gross Profit	0.00	662,395.42	835,185.90	1,497,581.32	1,497,581.32
Expense					
Salaries & EE Benefits					
505 · Salaries & Wages	205,269.09	153,717.13	119,817.02	478,803.24	478,803.24
520 · FICA - District Share	15,531.60	11,353.83	8,995.72	35,881.15	35,881.15
530 · Med/Life Insurance- Dist Share	26,865.15	35,763.98	17,176.06	79,805.19	79,805.19
540 · PERS - District Share	64,795.68	11,392.01	7,242.44	83,430.13	83,430.13
560 · Workers Comp Ins	2,059.87	5,593.08	6,063.89	13,716.84	13,716.84
Total Salaries & EE Benefits	314,521.39	217,820.03	159,295.13	691,636.55	691,636.55
Services & Supplies					
610 · Bank Fees	22,067.25	0.00	0.00	22,067.25	22,067.25
620 · Communications & Internet	3,970.50	3,935.66	4,504.94	12,411.10	12,411.10
630 · Equip - Office	1,571.75	155.91	0.00	1,727.66	1,727.66
640 · Fuel & Oil	0.00	3,523.94	2,846.80	6,370.74	6,370.74
645 · Insurance	0.00	40,955.72	40,955.73	81,911.45	81,911.45
657 · Lab	0.00	11,448.45	8,371.81	19,820.26	19,820.26
660 · Memberships & Subscription	14,761.22	42,852.01	12,036.14	69,649.37	69,649.37
670 · Postage & Shipping	9,453.56	0.00	0.00	9,453.56	9,453.56
675 · Professional Services	20,938.76	5,892.80	16,459.38	43,290.94	43,290.94
685 · Rents	4,719.19	0.00	0.00	4,719.19	4,719.19
690 · Safety & Security	578.67	2,579.33	2,155.33	5,313.33	5,313.33
700 · Tools & Instruments	0.00	237.24	369.32	606.56	606.56
703 · Supplies - Clothing & Personal	916.96	1,329.68	1,597.82	3,844.46	3,844.46
705 · Supplies - Office	2,789.84	70.75	187.47	3,048.06	3,048.06
715 · Supplies-Chemicals-Operating	0.00	23,259.75	46,447.50	69,707.25	69,707.25
720 · Supplies - Inventory - Other	104.14	24,431.10	2,842.21	27,377.45	27,377.45
735 · Training/Classes/Certs/ClassB	0.00	334.42	1,405.20	1,739.62	1,739.62
745 · Travel / Lodging	7.00	0.00	0.00	7.00	7.00
750 · Utilities	4,300.14	43,548.55	153,265.76	201,114.45	201,114.45
760 · Waste Disposal	328.12	27,180.55	1,978.84	29,487.51	29,487.51
795 · Yolo Co	0.00	0.00	16,594.90	16,594.90	16,594.90
799 · Team Building	1,146.81	0.00	0.00	1,146.81	1,146.81
Total Services & Supplies	87,653.91	231,735.86	312,019.15	631,408.92	631,408.92
Repairs & Replacement					
810 · R&R Buildings & Grounds	2,044.62	108.09	0.00	2,152.71	2,152.71
830 · R&R Equipment	0.00	0.00	17.10	17.10	17.10
Total Repairs & Replacement	2,044.62	108.09	17.10	2,169.81	2,169.81
Total Expense	404,219.92	449,663.98	471,331.38	1,325,215.28	1,325,215.28
Net Ordinary Income	-404,219.92	212,731.44	363,854.52	172,366.04	172,366.04
Net Income	-404,219.92	212,731.44	363,854.52	172,366.04	172,366.04

CLO Water and Wastewater District
PROJECTED BUDGET 2024-2025

6

Target % > 50%

As of November 2024 Summary	WATER				WASTEWATER			
	Budget		Actual YTD		Budget		Actual YTD	
	Annual	YTD	Amount	%	Annual	YTD	Amount	%
Total Operating Revenue	1,374,612	687,306	835,186	61%	1,248,780	624,390	662,396	53%
Total Operating Expenses	1,397,481	698,741	673,442	48%	1,366,371	683,185	651,776	48%
Operating Balance (loss)	(22,869)	(11,435)	161,744		(117,591)	(58,795)	10,620	
420 Connection Fees	10,000	5,000	-	0%	10,000	5,000	10,245	102%
445 Bulk Water Sales	50,000		4,475					
450 Non S/W Rev - ATT Cell Lease	9,606	4,803	10,588		9,606	4,803	10,039	
450 Non S/W Rev - County Treasury/misc	100,000	50,000	62,132	62%	165,000	82,500	62,131	38%
Reserves	50,000	25,000	-	0%	25,000	12,500		0%
Net Change In Net Position (loss)	96,737	23,368	238,939		42,015	21,008	93,035	

Current Revenue Notes:

General Ledger	\$78,137.62
District CRP	\$217,957.42
Paradise Cove CRP	\$130,951.02
Water Reserve	\$151,272.65
Sewer Reserve	\$61,886.50
USDA Restricted Funds	\$324,000.00
LAIF	\$633.10
Total	\$964,838.31

Past Revenue Notes

As of November 2024 Operating Revenue	WATER				WASTEWATER			
	Budget		Actual YTD		Budget		Actual YTD	
	Annual	YTD	Amount	%	Annual	YTD	Amount	%
410 Client Reg Pmt	1,341,612	670,806	743,141	55%	1,212,480	606,240	567,919	47%
430 Penalty & Interest	33,000	16,500	14,848	45%	36,300	18,150	12,060	33%
440 Misc. Mcard Fee Reimbursement	-	-	2	0%	-	-	2	0%
Total Revenue >	1,374,612	687,306	757,991	55%	1,248,780	624,390	579,981	46%

As of November 2024 Operating Expenses	WATER				WASTEWATER			
	Budget		Actual		Budget		Actual	
	Annual	YTD	YTD	%	Annual	YTD	YTD	%
505 Salaries & Wages	431,386	215,693	222,452	52%	565,111	282,556	256,352	45%
520 FICA - District Share	35,003	17,501	16,762	48%	46,986	23,493	19,120	41%
530 Medical Ins - District Share	69,968	34,984	30,609	44%	120,067	60,034	49,197	41%
540 CalPERS - District Share	80,947	40,473	39,640	49%	95,604	47,802	43,790	46%
550 Unemployment	2,500	1,250	-	0%	2,500	1,250	-	0%
560 Workmans Compensation	28,460	14,230	7,094	25%	30,435	15,217	6,623	22%
Salaries and Employee Benefits >	648,263	324,132	316,556	49%	860,703	430,352	375,081	44%

605 Advertising	200	100	-	0%	200	100	-	0%
610 Bank Fees	19,810	9,905	11,034	56%	19,800	9,900	11,034	56%
620 Communications & Internet	19,000	9,500	6,491	34%	19,000	9,500	5,922	31%
622 Board Exp	3,500	1,750	-	0%	3,500	1,750	-	0%
625 Equip - Field <\$4,000.00	2,500	1,250	-	0%	4,000	2,000	-	0%
630 Equip - Office	2,000	1,000	786	39%	2,500	1,250	942	38%
640 Fuel & Oil	15,200	7,600	2,847	19%	12,500	6,250	3,524	28%
645 Insurance	44,100	22,050	40,956	93%	44,000	22,000	40,956	93%

650	Interest	2,000	1,000	-	0%	2,000	1,000	<u>19</u>	-	0%
657	Lab	22,200	11,100	8,372	38%	18,630	9,315	11,448	61%	
660	Memberships/Subscriptions/Licenses	45,500	22,750	19,417	43%	54,500	27,250	50,233	92%	
665	Mileage Reimb	500	250	-	0%	250	125	-	0%	
670	Postage & Shipping	13,000	6,500	4,727	36%	13,000	6,500	4,727	36%	
675	Professional Services	30,000	15,000	26,929	90%	25,000	12,500	16,363	65%	
685	Rents	8,338	4,169	2,360	28%	8,338	4,169	2,360	28%	
690	Safety & Security	5,250	2,625	2,445	47%	8,750	4,375	2,869	33%	
700	Tools & Instruments	3,700	1,850	369	10%	2,500	1,250	237	9%	
703	Apparel	3,350	1,675	2,057	61%	3,150	1,575	1,789	57%	
705	Supplies - Office	4,000	2,000	1,582	40%	4,000	2,000	1,466	37%	
715	Treatment Chemicals	125,250	62,625	46,448	37%	55,000	27,500	23,260	42%	
720	Supplies - Operating - Other	5,000	2,500	2,894	58%	28,000	14,000	24,483	87%	
730	Taxes - Licenses	0	0	-	0%	0	0	-	0%	
735	Training	3,750	1,875	1,405	37%	2,750	1,375	334	12%	
745	Travel	2,000	1,000	4	0%	1,750	875	4	0%	
750	Utilities	266,970	133,485	155,416	58%	108,770	54,385	45,699	42%	
760	Waste Disposal	30,350	15,175	2,143	7%	56,030	28,015	27,345	49%	
795	Yolo Co	61,000	30,500	16,595	27%					
799	Misc	1,750	875	574	0%	1,750	875	574	0%	
	Services and Supplies >	740,218	370,109	355,847	48%	499,668	249,834	275,565	55%	
	Repairs & Replacement									
810	R&R Buildings & Grounds	6,000	3,000	1,023	17%	3,500	1,750	1,131	32%	
815	R&R Damage Claims	0	0	-	0%	-	-	-	0%	
820	R&R Lift Stations	-	-	-	0%	-	-	-	0%	
830	R&R Equipment	0	0	17	113333%	0	0	-	0%	
832	R&R Mains/Service Lines	-	-	-	0%	-	-	-	0%	
840	R&R Vehicles	3,000	1,500	-	0%	2,500	1,250	-	0%	
	Repairs & Replacement >	9,000	4,500	1,040	12%	6,000	3,000	1,131	19%	
	Total Expenses >	1,397,481	698,741	673,442	48%	1,366,371	683,185	651,776	48%	

6 Administration Budget Variance Report July 1, 2024 through June 30, 2025						Target % >	50.0%	GL ADMIN
As of November 2024		2024-2025 Budget		Actual	%	Total		
Expenses		Annual	YTD	YTD	Spent	Remaining		
505	Salaries & Wages	419,495	209,747	205,269	48.9%	214,226		
520	FICA - District Share	33,155	16,577	15,532	46.8%	17,623		
530	Medical Ins - District Share	63,054	31,527	26,865	42.6%	36,189		
540	CalPERS-District Share (Unfunded Liab \$103,000)	132,659	66,329	64,796	48.8%	67,863		
550	Unemployment	5,000	2,500		0.0%	5,000		
560	Workers Comp Ins	8,186	4,093	2,060	25.2%	6,126		
Salaries and Employee Benefits >		661,548	330,774	314,522	47.5%	347,026		
605	Advertising	400	200	-	0.0%	400		
610	Bank Fees	39,600	19,800	22,067	55.7%	17,533		
620	Communications & Internet	7,000	3,500	3,971	56.7%	3,029		
622	Board	7,000	3,500		0.0%	7,000		
625	Equip - Field <\$4,999.00	0	0		0.0%	0		
630	Equip - Office	3,000	1,500	1,572	52.4%	1,428		
640	Fuel & Oil	0	0		0.0%	0		
645	Insurance	0	0		0.0%	0		
650	Interest	0	0		0.0%	0		
657	Outsource Lab / Internal Lab	0	0		0.0%	0		
660	Memberships/Subscriptions/licenses	15,000	7,500	14,761	98.4%	239		
670	Postage & Shipping	26,000	13,000	9,454	36.4%	16,546		
675	Professional Services (Legal, IT)	40,000	20,000	20,939	52.3%	19,061		
685	Rents	16,675	8,338	4,719	28.3%	11,956		
690	Safety & Security	1,500	750	579	38.6%	921		
700	Tools & Instruments	0	0		0.0%	0		
703	Apparel	700	350	917	131.0%	(217)		
705	Supplies - Office	6,000	3,000	2,790	46.5%	3,210		
715	Treatment Chemicals	0	0		0.0%	0		
720	Supplies - Operating - Other	0	0	104	0.0%	(104)		
735	Training, Certifications	3,500	1,750		0.0%	3,500		
745	Travel	3,000	1,500	7	0.2%	2,993		
750	Utilities	7,540	3,770	4,300	57.0%	3,240		
760	Waste Disposal	700	350	328	46.9%	372		
795	Yolo Co	0	0		0.0%	0		
799	Team Building	3,500	1,750	1,147	32.8%	2,353		
Services and Supplies >		181,115	90,558	87,655	48.4%	93,460		
Repairs & Replacement								
810	R&R Buildings & Grounds	2,000	1,000	2,045	102.3%	(45)		
815	R & R Damage Claims	0	0		0.0%	0		
820	R&R Lift Stations	-	-		0.0%	-		
830	R&R Equipment	0	0		0.0%	0		
832	R&R Mains/Service Lines	0	0		0.0%	0		
840	R&R Vehicles	0	0		0.0%	0		
Repairs & Replacement >		2,000	1,000	2,045	102.2%	(45)		
Total Expenses >		844,663	422,331	404,222	47.9%	440,441		
810	Sprayed Admin for coachroaches							

6 Wastewater Budget Variance Report July 1, 2024 through June 30, 2025		Target % >		50.0%	GL WASTEWATER	
As of November 2024		2024-2025 Budget		Actual	%	
Expenses		Annual	YTD	YTD	Spent	Total Remaining
505	Salaries & Wages	355,364	177,682	153,717	43.3%	201,647
520	FICA - District Share	30,409	15,204	11,354	37.3%	19,055
530	Medical Ins - District Share	88,540	44,270	35,764	40.4%	52,776
540	CalPERS - District Share	29,274	14,637	11,392	38.9%	17,882
550	Unemployment	0	0		0.0%	0
560	Workmans Compensation	26,342	13,171	5,593	21.2%	20,749
Salaries and Employee Benefits >		529,929	264,965	217,820	41.1%	312,109
605	Advertising	0	0		0.0%	0
610	Bank Fees	0	0		0.0%	0
620	Communications & Internet	13,000	6,500	3,936	30.3%	9,064
622	Board	0	0		0.0%	0
625	Equip - Field <\$4,999.00	1,500	750		0.0%	1,500
630	Equip - Office	1,000	500	156	15.6%	844
640	Fuel & Oil	7,500	3,750	3,524	47.0%	3,976
645	Insurance	44,000	22,000	40,956	93.1%	3,044
650	Interest	0	0		0.0%	0
657	Outsource Lab / Internal Lab	18,630	9,315	11,448	61.4%	7,182
660	Memberships/Subscriptions/Permits	47,000	23,500	42,852	91.2%	4,148
665	Mileage Reimb	250	125		0.0%	250
670	Postage & Shipping	0	0		0.0%	0
675	Professional Services (SCADA)	5,000	2,500	5,893	117.9%	(893)
685	Rents	0	0		0.0%	0
690	Safety & Security	8,000	4,000	2,579	32.2%	5,421
700	Tools & Instruments	2,500	1,250	237	9.5%	2,263
703	Apparel	2,800	1,400	1,330	47.5%	1,470
705	Supplies - Office	1,000	500	71	7.1%	929
715	Treatment Chemicals	55,000	27,500	23,260	42.3%	31,740
720	Supplies-Operating-Other-Titan Tubes	28,000	14,000	24,431	87.3%	3,569
730	Vacant	-	-			-
735	Training, Certifications	1,000	500	334	33.4%	666
745	Travel	250	125		0.0%	250
750	Utilities	105,000	52,500	43,549	41.5%	61,451
760	Waste Disposal	55,680	27,840	27,181	48.8%	28,499
795	Yolo Co	0	0		0.0%	0
798	Customer Refund					
799.1	Team Building					
Services and Supplies >		397,110	198,555	231,737	58.4%	165,373
Repairs & Replacement						
810	R&R Buildings & Grounds	2,500	1,250	108	4.3%	2,392
815	R&R Damage Claims	0	0		0.0%	0
820	R&R Lift Stations	0	0		0.0%	0
830	R&R Equipment	0	0		0.0%	0
832	R&R Mains/Service Lines	0	0	-	0.0%	-
840	R&R Vehicles	2,500	1,250		0.0%	2,500
Repairs & Replacement >		5,000	2,500	108	2.2%	4,892
Total Expenses >		932,039	466,020	449,665	48.2%	482,374
Expense Notes						

6	Water Budget Variance Report July 1, 2024 through June 30, 2025	Target % >	50.0%	GL WATER		
	As of November 2024	2024-2025 Budget	Actual	%		
	Expenses	Annual	YTD	YTD	Spent	Total Remaining
505	Salaries & Wages	221,639	110,819	119,817	54.1%	101,822
520	FICA - District Share	18,426	9,213	8,996	48.8%	9,430
530	Medical Ins - District Share	38,441	19,220	17,176	44.7%	21,265
540	CalPERS - District Share	14,617	7,309	7,242	49.5%	7,375
550	Unemployment	0	0		0.0%	0
560	Workmans Compensation	24,368	12,184	6,064	24.9%	18,304
	Salaries and Employee Benefits >	317,490	158,745	159,295	50.2%	158,195
605	Advertising	0	0		0.0%	0
610	Bank Fees	0	0		0.0%	0
620	Communications & Internet	13,000	6,500	4,505	34.7%	8,495
622	Board Exp	0	0		0.0%	0
625	Equip - Field <\$4,999.00	0	0		0.0%	0
630	Equip - Office	500	250		0.0%	500
640	Fuel & Oil	10,200	5,100	2,847	27.9%	7,353
645	Insurance	44,100	22,050	40,956	92.9%	3,144
650	Interest	0	0		0.0%	0
657	Outside Lab / Internal Lab	22,200	11,100	8,372	37.7%	13,828
660	Memberships/Subscriptions/Permits	38,000	19,000	12,036	31.7%	25,964
665	Mileage Reimb	500	250		0.0%	500
670	Postage & Shipping	0	0		0.0%	0
675	Professional Services (SCADA, Mtce Prog)	10,000	5,000	16,459	164.6%	(6,459)
685	Rents	0	0		0.0%	0
690	Safety & Security (includes boots)	4,500	2,250	2,155	47.9%	2,345
700	Tools & Instruments	3,700	1,850	369	10.0%	3,331
703	Apparel	3,000	1,500	1,598	53.3%	1,402
705	Supplies - Office	1,000	500	187	18.7%	813
715	Treatment Chemicals	125,250	62,625	46,448	37.1%	78,802
720	Supplies - Operating - Other	5,000	2,500	2,842	56.8%	2,158
730	Vacant	0	0		0.0%	0
735	Training, Certifications	2,000	1,000	1,405	70.3%	595
745	Travel	500	250		0.0%	500
750	Utilities	263,200	131,600	153,266	58.2%	109,934
760	Waste Disposal	30,000	15,000	1,979	6.6%	28,021
795	Yolo Co	61,000	30,500	16,595	27.2%	44,405
798	Customer Refund					
799	Team Building	0	0		0.0%	0
	Services and Supplies >	637,650	318,825	312,019	48.9%	325,631
	Repairs & Replacement					
810	R&R Buildings & Grounds	5,000	2,500		0.0%	5,000
815	R & R Damage Claims	0	0		0.0%	0
820	R&R Lift Stations	0	0		0.0%	0
830	R&R Equipment	0	0	17	0.0%	(17)
832	R&R Mains	0	0		0.0%	-
840	R&R Vehicles	3,000	1,500		0.0%	3,000
	Repairs & Replacement >	8,000	4,000	17	0.2%	7,983
	Total Expenses >	963,140	481,570	471,331	48.9%	491,809

675 Profesional Services: \$8K contract with MC for Lead Service Line Inventory

11:04 AM

Clearlake Oaks County Water District

CRP/CIP Profit and Loss

01/09/25

Accrual Basis

July through December 2024

	PC (CRP)	Water (CRP)	Sewer (CRP)	Total CRP	TOTAL
Ordinary Income/Expense					
Income					
Income					
425 · CRP (Capital Replacment Plan)	9,729.39	230,561.27	264,602.71	504,893.37	504,893.37
430 · Penalty & Interest	150.95	5,991.49	6,602.43	12,744.87	12,744.87
440 · Misc Revenue	0.00	41.76	71.55	113.31	113.31
450 · Other - Non S/W Rev	0.00	17.28	17.28	34.56	34.56
Total Income	<u>9,880.34</u>	<u>236,611.80</u>	<u>271,293.97</u>	<u>517,786.11</u>	<u>517,786.11</u>
Total Income	<u>9,880.34</u>	<u>236,611.80</u>	<u>271,293.97</u>	<u>517,786.11</u>	<u>517,786.11</u>
Gross Profit	<u>9,880.34</u>	<u>236,611.80</u>	<u>271,293.97</u>	<u>517,786.11</u>	<u>517,786.11</u>
Expense					
Salaries & EE Benefits					
505 · Salaries & Wages	0.00	124,824.50	96,572.95	221,397.45	221,397.45
520 · FICA - District Share	0.00	9,340.58	5,857.91	15,198.49	15,198.49
530 · Med/Life Insurance- Dist Share	0.00	14,531.89	15,007.06	29,538.95	29,538.95
540 · PERS - District Share	0.00	6,068.49	7,407.87	13,476.36	13,476.36
560 · Workers Comp Ins	0.00	6,668.13	6,668.13	13,336.26	13,336.26
Total Salaries & EE Benefits	<u>0.00</u>	<u>161,433.59</u>	<u>131,513.92</u>	<u>292,947.51</u>	<u>292,947.51</u>
Services & Supplies					
620 · Communications & Internet	0.00	370.20	370.20	740.40	740.40
640 · Fuel & Oil	0.00	8,465.33	8,465.31	16,930.64	16,930.64
650 · Interest	0.00	1,448.04	1,448.09	2,896.13	2,896.13
657 · Lab	0.00	1,100.00	0.00	1,100.00	1,100.00
660 · Memberships & Subscription	0.00	48.75	48.75	97.50	97.50
690 · Safety & Security	0.00	3,440.13	3,268.44	6,708.57	6,708.57
700 · Tools & Instruments	0.00	1,374.74	1,374.65	2,749.39	2,749.39
703 · Supplies - Clothing & Personal	0.00	1,379.91	1,379.87	2,759.78	2,759.78
705 · Supplies - Office	0.00	7.90	7.89	15.79	15.79
720 · Supplies - Inventory - Other	0.00	5,487.95	815.63	6,303.58	6,303.58
735 · Training/Classes/Certs/ClassB	0.00	1,092.42	942.42	2,034.84	2,034.84
Total Services & Supplies	<u>0.00</u>	<u>24,215.37</u>	<u>18,121.25</u>	<u>42,336.62</u>	<u>42,336.62</u>
Repairs & Replacement					
810 · R&R Buildings & Grounds	0.00	806.60	335.70	1,142.30	1,142.30
820 · R&R Lift Stations	0.00	0.00	3,817.28	3,817.28	3,817.28
830 · R&R Equipment					
830.1 · Hydrants	0.00	6,143.98	0.00	6,143.98	6,143.98
830 · R&R Equipment - Other	0.00	19,942.87	19,938.72	39,881.59	39,881.59
Total 830 · R&R Equipment	<u>0.00</u>	<u>26,086.85</u>	<u>19,938.72</u>	<u>46,025.57</u>	<u>46,025.57</u>
832 · R&R Mains and Sewer Lines	0.00	9,167.73	2,885.86	12,053.59	12,053.59
840 · R&R Vehicles	0.00	4,253.51	4,243.39	8,496.90	8,496.90
Total Repairs & Replacement	<u>0.00</u>	<u>40,314.69</u>	<u>31,220.95</u>	<u>71,535.64</u>	<u>71,535.64</u>
Total Expense	<u>0.00</u>	<u>225,963.65</u>	<u>180,856.12</u>	<u>406,819.77</u>	<u>406,819.77</u>
Net Ordinary Income	<u>9,880.34</u>	<u>10,648.15</u>	<u>90,437.85</u>	<u>110,966.34</u>	<u>110,966.34</u>
Net Income	<u>9,880.34</u>	<u>10,648.15</u>	<u>90,437.85</u>	<u>110,966.34</u>	<u>110,966.34</u>

Budget Variance Report July 1, 2024 through June 30, 2025

6

Target % > **50.0%** CRP-PC

As of November 2024

Summary		Budget Annual	YTD	Actual YTD Amount	%	
PC CRP Revenue		19,536	9,768	9,880	50.6%	0%
PC CRP Expenses		0	0	-	0.0%	0%

Expenses		2024-2025 Budget		Actual	%	Total
		Annual	YTD	YTD	Spent	Remaining
605	Advertising	-	-	-	0.0%	-
610	Bank Fees	-	-	-	0.0%	-
620	Communications & Internet	-	-	-	0.0%	-
622	Board	-	-	-	0.0%	-
625	Equip - Field <\$4,999.00	-	-	-	0.0%	-
630	Equip - Office	-	-	-	0.0%	-
640	Fuel & Oil	-	-	-	0.0%	-
645	Insurance	-	-	-	0.0%	-
650	Interest	-	-	-	0.0%	-
657	Outsource Lab / Internal Lab	-	-	-	0.0%	-
660	Memberships & Subscriptions	-	-	-	0.0%	-
665	Mileage Reimb	-	-	-	0.0%	-
670	Postage & Shipping	-	-	-	0.0%	-
675	Professional Services (SCADA)	-	-	-	0.0%	-
685	Rents	-	-	-	0.0%	-
690	Safety & Security	-	-	-	0.0%	-
700	Tools & Instruments	-	-	-	0.0%	-
703	Apparel	-	-	-	0.0%	-
705	Supplies - Office	-	-	-	0.0%	-
715	Treatment Chemicals	-	-	-	0.0%	-
720	Supplies - Operating - Other	-	-	-	0.0%	-
730	Vacant	-	-	-	0.0%	-
735	Training, Certifications	-	-	-	0.0%	-
745	Travel / Lodging	-	-	-	0.0%	-
750	Utilities	-	-	-	0.0%	-
760	Waste Disposal	-	-	-	0.0%	-
795	Yolo Co	-	-	-	0.0%	-
799	Team Building	0	0	-	0.0%	0
Services and Supplies >		0	0	-	0.0%	0
Repairs & Replacement						
810	R&R Buildings & Grounds	-	-	-	0.0%	-
815	R&R Damage Claims	0	0	-	0.0%	0
820	R&R Lift Stations	-	-	-	0.0%	-
830	R&R Equipment	-	-	-	0.0%	-
832	R&R Mains/Laterals	-	-	-	0.0%	-
840	R&R Vehicles	-	-	-	0.0%	-
Repairs & Replacement >		0	0	-	0.0%	0
Total Expenses >		0	0	-	0.0%	0

Budget Variance Report July 1, 2024 through June 30, 2025

6

Target % > 50.0% CRP-WATER

As of November 2024 Summary	WATER - CRP Budget		Actual YTD			
	Annual	YTD	Amount	%		
WATER CRP Revenue	474,875	237,438	236,612	49.8%	0%	
WATER CRP Expenses	462,264	231,132	225,965	48.9%	0%	

Operating Balance	12,611	6,305	10,647
-------------------	--------	-------	--------

Expenses		2020-2021 Budget Annual	YTD	Actual YTD	% Spent	Total Remaining	
505	Salaries & Wages	227,056	113,528	124,825	55.0%	102,231	
520	FICA - District Share	18,919	9,460	9,341	49.4%	9,578	
530	Medical Ins - District Share	31,527	15,764	14,532	46.1%	16,995	
540	CalPERS - District Share	15,402	7,701	6,068	39.4%	9,334	
550	Unemployment	0	0		0.0%	0	
560	Workmans Compensation	20,710	10,355	6,668	32.2%	14,042	
Salaries and Employee Benefits >		313,614	156,807	161,434	51.5%	152,180	
605	Advertising	0	0	-	0.0%	0	
610	Bank Fees	0	0	-	0.0%	0	
620	Communications & Internet	3,500	1,750	370	10.6%	3,130	
622	Board	0	0		0.0%	0	
625	Equip - Field <\$4,999.00	1,250	625		0.0%	1,250	
630	Equip - Office	-	-				
640	Fuel & Oil	14,400	7,200	8,465	58.8%	5,935	
645	Insurance	0	0		0.0%	0	
650	Interest	6,000	3,000	1,448	24.1%	4,552	
657	Outsource Lab / Internal Lab	5,000	2,500	1,100	22.0%	3,900	
660	Memberships/Subscriptions/Licenses	0	0	49	0.0%	(49)	
665	Mileage Reimb	0	0		0.0%	0	
670	Postage & Shipping	0	0		0.0%	0	
675	Professional Services Leak Chk	-	-		0.0%	-	
685	Rents	0	0		0.0%	0	
690	Safety & Security	5,000	2,500	3,440	68.8%	1,560	
700	Tools & Instruments	2,000	1,000	1,375	68.8%	625	
703	Apparel	2,000	1,000	1,380	69.0%	620	
705	Supplies - Office	-	-	8	0.0%	(8)	
715	Treatment Chemicals	0	0		0.0%	0	
720	Supplies - Operating - Other	3,000	1,500	5,488	182.9%	(2,488)	
735	Training, Certifications	500	250	1,092	218.4%	(592)	
745	Travel	-	-		0.0%	-	
750	Utilities	0	0		0.0%	0	
760	Waste Disposal	0	0		0.0%	0	
795	Yolo Co	0	0		0.0%	0	
799	Team Building	0	0		0.0%	0	
Services and Supplies >		42,650	21,325	24,215	56.8%	18,435	
Repairs & Replacement							
810	R&R Buildings & Grounds	3,000	1,500	807	26.9%	2,193	
815	R & R Damage Claims	0	0		0.0%	0	
820	R&R Lift Stations	0	0		0.0%	0	
830	R&R Equipment	35,000	17,500	19,943	57.0%	15,057	
830.1	Hydrants	-	-	6,144			
832	R&R Mains/Service Lines/Tanks	50,000	25,000	9,168	18.3%	40,832	
840	R&R Vehicles	18,000	9,000	4,254	23.6%	13,746	
505=PTO C/O		Repairs & Replacement >	106,000	53,000	40,316	38.0%	65,684
720 6" Vlve LVE		Total Expenses >	462,264	231,132	225,965	48.9%	236,299

Budget Variance Report July 1, 2024 through June 30, 2025

6

SEWER-CRP

Target % > 50.0% CRP-SEWER

As of November 2024

Summary	Budget Annual	YTD		Actual YTD Amount	%
SEWER CRP Revenue	599,800	299,900	271,294	45.2%	0%
SEWER CRP Expenses	588,962	294,481	180,856	30.7%	0%

Operating Balance (loss)	10,838	5,419	90,438
--------------------------	--------	-------	--------

Expenses		2020-2021 Budget		Actual	%	Total
		Annual	YTD	YTD	Spent	Remaining
505	Salaries & Wages	302,823	151,411	96,573	31.9%	206,250
520	FICA - District Share	24,988	12,494	5,858	23.4%	19,130
530	Medical Ins - District Share	90,580	45,290	15,007	16.6%	75,573
540	CalPERS - District Share	22,235	11,118	7,408	33.3%	14,827
550	Unemployment	-	-	-	0.0%	-
560	Workmans Compensation	26,186	13,093	6,668	25.5%	19,518
Salaries and Employee Benefits >		466,812	233,406	131,514	28.2%	335,298
605	Advertising	0	0	-	0.0%	0
610	Bank Fees	0	0	-	0.0%	0
620	Communications & Internet	5,000	2,500	370	7.4%	4,630
622	Board	0	0	-	0.0%	0
625	Equip - Field <\$4,999.00	1,250	625	-	0.0%	1,250
630	Equip - Office	-	-	-	0.0%	-
640	Fuel & Oil	14,400	7,200	8,465	58.8%	5,935
645	Insurance	0	0	-	0.0%	0
650	Interest	6,000	3,000	1,448	24.1%	4,552
657	Outsource Lab / Internal Lab	0	0	-	0.0%	0
660	Memberships/Subscriptions/Licenses	0	0	-	0.0%	0
665	Mileage Reimb	0	-	49	0.0%	(49)
670	Postage & Shipping	0	0	-	0.0%	0
675	Professional Services (SCADA)	0	0	-	0.0%	0
685	Rents	-	-	-	0.0%	-
690	Safety & Security (includes Boots)	5,000	2,500	3,268	65.4%	1,732
700	Tools & Instruments	2,000	1,000	1,375	0.0%	625
703	Apparel	2,000	1,000	1,380	69.0%	620
705	Supplies - Office	-	-	8	0.0%	(8)
715	Treatment Chemicals	0	0	-	0.0%	0
720	Supplies - Operating - Other	3,000	1,500	816	27.2%	2,184
735	Training, Certification	500	250	942	0.0%	(442)
745	Travel	-	-	-	0.0%	-
750	Utilities	0	0	-	0.0%	0
760	Waste Disposal	0	0	-	0.0%	0
795	Yolo Co	0	0	-	0.0%	0
799	Team Building	0	0	-	0.0%	0
Services and Supplies >		39,150	19,575	18,121	46.3%	21,029
Repairs & Replacement						
810	R&R Buildings & Grounds	3,000	1,500	336	11.2%	2,664
815	R & R Damage Claims	0	0	-	0.0%	0
820	R&R Lift Stations	20,000	10,000	3,817	19.1%	16,183
830	R&R Equipment	30,000	15,000	19,939	66.5%	10,061
832	R&R Mains/Laterals	20,000	10,000	2,886	14.4%	17,114
840	R&R Vehicles	10,000	5,000	4,243	42.4%	5,757
Repairs & Replacement >		83,000	41,500	31,221	37.6%	51,779
Total Expenses >		588,962	294,481	180,856	30.7%	408,106

11:25 AM

Clearlake Oaks County Water District

Capital Improvements

As of December 31, 2024

01/09/25

Accrual Basis

Date	Name	Memo	Class	Amount
130	Const In Progress - Studies			
135	CRP WATER (CAPITOL IMPROVEMENTS - WATER - WAS 1199100)			
131 · Waste Water Plant				
131.1 · Pumps/Equipment				
09/30/2024	Xylem Water Solution...	Flygt Submersible P...	CRP:Sewer	1,636.64
10/25/2024	Xylem Water Solution...	Approved RM 07/18/...	GL:Sewer	12,916.55
Total 131.1 · Pumps/Equipment				14,553.19
131 · Waste Water Plant - Other				
Total 131 · Waste Water Plant - Other				
Total 131 · Waste Water Plant				14,553.19
127 · Water Plant				
127.7 · Ozone System				
Total 127.7 · Ozone System				
127.6 · Swan AMI Turbiwell Monitor				
Total 127.6 · Swan AMI Turbiwell Monitor				
127.4 · PH System				
Total 127.4 · PH System				
127.2 · Harvy Vault Chlor Inject Proj				
Total 127.2 · Harvy Vault Chlor Inject Proj				
127.1 · Major Equipment				
09/13/2024	Ryan Process, Inc.	Double Wall Contain...	CRP:Water	20,597.45
Total 127.1 · Major Equipment				20,597.45
127 · Water Plant - Other				
Total 127 · Water Plant - Other				
Total 127 · Water Plant				20,597.45
120 · District General CRP (EQUIPMENT - WAS 1011181)				
120.01 · General Equipment/Tools (GENERAL EQUIPMENT - WATER - WAS 1011190)				
Total 120.01 · General Equipment/Tools (GENERAL EQUIPMENT - WATER - ...				
120.60 · Office (OFFICE EQUIPMENT - WAS 1011192)				
Total 120.60 · Office (OFFICE EQUIPMENT - WAS 1011192)				
120.75 · SCADA				
07/09/2024	Mendo Mill	Scada Project at Wa...	CRP:Sewer	320.21
07/23/2024	Southport Control Sol...	Lift Station Counters...	CRP:Water	992.00
07/23/2024	Southport Control Sol...		CRP:Sewer	992.00
10/08/2024	Amazon	Battery Backup for S...	CRP:Water	155.47
11/20/2024	Southport Control Sol...	Seperated the contr...	CRP:Water	3,000.00
11/20/2024	Southport Control Sol...	Chlorine Contact Ch...	CRP:Sewer	519.34
12/02/2024	Southport Control Sol...	Effluent Pump Buildi...	CRP:Sewer	2,354.00
Total 120.75 · SCADA				8,333.02
120.90 · Vehicles/Generators/Trailers				
Total 120.90 · Vehicles/Generators/Trailers				
120 · District General CRP (EQUIPMENT - WAS 1011181) - Other				
Total 120 · District General CRP (EQUIPMENT - WAS 1011181) - Other				
Total 120 · District General CRP (EQUIPMENT - WAS 1011181)				8,333.02
122 · Bldgs/Grounds Cap Improvements				
Total 122 · Bldgs/Grounds Cap Improvements				
124 · D/C System Cap Improvements (COLLECTION SYSTEM - SEWER - WAS 1011161)				
124.2 · GIS Online Mapping System				
Total 124.2 · GIS Online Mapping System				

11:25 AM

01/09/25

Accrual Basis

Clearlake Oaks County Water District
Capital Improvements
As of December 31, 2024

Date	Name	Memo	Class	Amount
124.30 · Lift Stations				
124.50 · Mains				
Total 124.50 · Mains				
124.60 · Meters				
Total 124.60 · Meters				
124.90 · Water Tanks				
Total 124.90 · Water Tanks				
124 · D/C System Cap Improvements (COLLECTION SYSTEM - SEWER - WAS 1011161) - Other				
Total 124 · D/C System Cap Improvements (COLLECTION SYSTEM - SEWE...				
Total 124 · D/C System Cap Improvements (COLLECTION SYSTEM - SEWER - ...				
125 · Land - Dist. Cap. Improvements				
Total 125 · Land - Dist. Cap. Improvements				
129 · ALLOW. FOR DEPRECIATION				
Total 129 · ALLOW. FOR DEPRECIATION				
280 · Loan				
280.20 · Crane Truck				
11/15/2024	Financial Pacific Leasi...	2024 Crane Truck; P...	CRP:Water	1,844.17
11/15/2024	Financial Pacific Leasi...	2024 Crane Truck; P...	CRP:Sewer	1,844.17
12/15/2024	Financial Pacific Leasi...	Payment #2	CRP:Water	1,582.03
12/15/2024	Financial Pacific Leasi...	Payment #2	CRP:Sewer	1,582.03
Total 280.20 · Crane Truck				6,852.40
280.04 · 2021 Water Truck				
07/22/2024	Kansas State Bank - ...	Payment #32	CRP:Water	786.69
07/22/2024	Kansas State Bank - ...	3359488	CRP:Sewer	786.69
08/20/2024	Kansas State Bank - ...	Payment #33	CRP:Water	789.27
08/20/2024	Kansas State Bank - ...	3359488	CRP:Sewer	789.28
09/20/2024	Kansas State Bank - ...	Payment #33	CRP:Water	791.86
09/20/2024	Kansas State Bank - ...	3359488	CRP:Sewer	791.87
10/21/2024	Kansas State Bank - ...	Payment #35	CRP:Water	794.47
10/21/2024	Kansas State Bank - ...	3359488	CRP:Sewer	794.46
11/20/2024	Kansas State Bank - ...	Payment #36	CRP:Water	797.07
11/20/2024	Kansas State Bank - ...	3359488	CRP:Sewer	797.07
12/20/2024	Kansas State Bank - ...	Payment #37	CRP:Water	799.69
12/20/2024	Kansas State Bank - ...	3359488	CRP:Sewer	799.69
Total 280.04 · 2021 Water Truck				9,518.11
280.15 · USDA Water Improvement Project (USDA Wtr Improvement Proj total \$5 Million)				
Total 280.15 · USDA Water Improvement Project (USDA Wtr Improvement Pr...				
280.02 · KS State Bank - 2019 Vac-Con				
07/15/2024	Kansas State Bank - ...	Pymt #55	CRP:Water	3,648.38
07/15/2024	Kansas State Bank - ...	3343293	CRP:Sewer	3,648.38
08/15/2024	Kansas State Bank - ...	Payment #56	CRP:Water	3,658.70
08/15/2024	Kansas State Bank - ...	3343293	CRP:Sewer	3,658.70
09/15/2024	Kansas State Bank - ...	Pymt #57	CRP:Water	3,669.05
09/15/2024	Kansas State Bank - ...	3343293	CRP:Sewer	3,669.05
10/15/2024	Kansas State Bank - ...	Payment #58	CRP:Water	3,679.43
10/15/2024	Kansas State Bank - ...	3343293	CRP:Sewer	3,679.43
11/15/2024	Kansas State Bank - ...	Payment #59	CRP:Water	3,689.83
11/15/2024	Kansas State Bank - ...	3343293	CRP:Sewer	3,689.84
12/15/2024	Kansas State Bank - ...	Payment #60	CRP:Water	3,700.28
12/15/2024	Kansas State Bank - ...	3343293	CRP:Sewer	3,700.28
Total 280.02 · KS State Bank - 2019 Vac-Con				44,091.35
280.12 · USDA Loan for Sewer Clarifier				
Total 280.12 · USDA Loan for Sewer Clarifier				
Total 280 · Loan				60,461.86

11:25 AM

Clearlake Oaks County Water District
Capital Improvements
As of December 31, 2024

01/09/25

Accrual Basis

<u>Date</u>	<u>Name</u>	<u>Memo</u>	<u>Class</u>	<u>Amount</u>
306 · Retained Earnings - OLD (Undistributed earnings of the corporation - ENDS 06/31/2011)				
Total 306 · Retained Earnings - OLD (Undistributed earnings of the corporation - ...				
Loans/Grants				
945 · Wastewater I and I Phase IV				
08/05/2024	MC Engineering, Inc	Prep of scope work ...	Loan/Grant:...	450.00
09/05/2024	MC Engineering, Inc	Agreement for Phas...	Loan/Grant:...	594.00
10/03/2024	MC Engineering, Inc	Reviewed Project Pri...	Loan/Grant:...	540.00
11/04/2024	MC Engineering, Inc	Verified Project Cost...	Loan/Grant:...	2,125.75
12/05/2024	MC Engineering, Inc	Gathered Data and ...	Loan/Grant:...	587.50
Total 945 · Wastewater I and I Phase IV				4,297.25
Total Loans/Grants				4,297.25
TOTAL				108,242.77



Ready for your tax refund? Save up to 10% on [TurboTax](#).

Accounts

[Transfer](#) [Settings](#)

GENERAL LEDGER *9122

Available **\$88,842.71

Current \$78,137.62

BALANCE TOTALS

Total Deposit Accounts \$78,137.62

**This balance may include overdraft or line of credit funds

Make a Payment

Make paying bills fast and easy

Pay your bills on one screen in seconds.

[Sign up for payments](#)

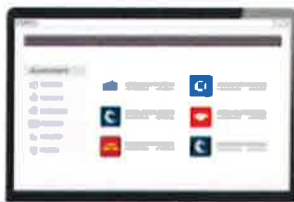
Get Help with Taxes



We've teamed up with TurboTax to help you get your **maximum refund, guaranteed.**

[Start for free](#)

Outside Accounts



No outside accounts added.

[Add account](#)

Money Management

 California CLASS will be closed on Monday, January 20th, in observance of Martin Luther King Jr. Day.



Clearlake Oaks County Water District (CA-01-0184)

[OPEN A NEW SUBACCOUNT](#)

Total Balance As Of 01/13/25: \$886,067.59

California CLASS
As of 01/13/25
\$886,067.59

[Detail →](#)

**California CLASS
Enhanced Cash**
As of 01/10/25
\$0.00

[Detail →](#)

Subaccounts

Account #	Name	Avail. Balance	Fund Name
CA-01-0184-0001	Water Reserves	\$151,272.65	California CLASS
CA-01-0184-0002	Sewer Reserves	\$61,886.50	California CLASS
CA-01-0184-0003	CRP Water	\$117,991.67	California CLASS
CA-01-0184-0004	CRP Sewer	\$99,965.75	California CLASS
CA-01-0184-0005	CRP PC	\$130,951.02	California CLASS
CA-01-0184-0006	General Savings	\$0.00	California CLASS
CA-01-0184-0007	Restricted Funds (Old Laif)	\$324,000.00	California CLASS
CA-01-0184-E001	General Savings	\$0.00	California CLASS Enhanced Cash
CA-01-0184-E002	Water Reserves	\$0.00	California CLASS Enhanced Cash
CA-01-0184-E003	Sewer Reserves	\$0.00	California CLASS Enhanced Cash

[View →](#)



California State Treasurer
Fiona Ma, CPA



Local Agency Investment Fund
P.O. Box 942809
Sacramento, CA 94209-0001
(916) 653-3001

January 13, 2025

[LAIF Home](#)
[PMIA Average Monthly Yields](#)

CLEARLAKE OAKS COUNTY WATER DISTRICT

AUDITOR/SECRETARY
P.O. BOX 709
12952 HIGHWAY 20
CLEARLAKE OAKS, CA 95423-0709

[Tran Type Definitions](#)

Account Number: 90-17-001

December 2024 Statement

Account Summary

Total Deposit:	0.00	Beginning Balance:	324,633.10
Total Withdrawal:	0.00	Ending Balance:	324,633.10

11:25 AM

01/09/25

Clearlake Oaks County Water District
Payroll Summary
December 2024

	Hours	Rate	Dec 24
Employee Wages, Taxes and Adjustments			
Gross Pay			
CTO Saved	-20	56.64	-1,178.06
CTO Used	32	37.74	1,413.63
Holiday	240	45.84	9,625.56
Holiday Worked (x2.5)	15	94.40	1,559.72
Overtime (x1.5)	110.75	68.76	6,745.88
PTO	135.78	32.01	5,821.90
Straight Duty Pay	1,808.5	45.84	72,330.09
			5,290.00
Total Gross Pay	2,322.03		101,608.72
Deductions from Gross Pay			
ACWA (pre-tax)			-1,518.59
AFLAC (pre-tax)			-489.42
AFLAC (taxable) AFTER TAX			-190.80
CALPers 457			-450.00
CALPers EE (Pretax)			-6,616.76
Total Deductions from Gross Pay			-9,265.57
Adjusted Gross Pay	2,322.03		92,343.15
Taxes Withheld			
Federal Withholding			-8,588.00
Medicare Employee			-1,444.23
Social Security Employee			-5,952.92
CA - Withholding			-3,440.74
CA - Disability			-1,095.61
Total Taxes Withheld			-20,521.50
Deductions from Net Pay			
Wage Garnishment			-269.52
Total Deductions from Net Pay			-269.52
Net Pay	2,322.03		71,552.13
Employer Taxes and Contributions			
Medicare Company			1,444.23
Social Security Company			5,952.92
Total Employer Taxes and Contributions			7,397.15

11:26 AM

Clearlake Oaks County Water District

Trial Balance

01/09/25

As of December 31, 2024

Accrual Basis

	Dec 31, 24	
	Debit	Credit
101.5 · CA CRP PC	129,357.47	
101.4 · CA CRP Sewer	130,618.13	
101.3 · CA CRP Water	155,787.00	
101.2 · CA Sewer Reserves	61,886.50	
101.1 · CA Water Reserves	151,272.65	
102.05 · CRP WATER - 9385	0.00	
102.14 · CalPERS RESERVE - 7355	0.00	
102.13 · SEWER RESERVES-9592	0.00	
102.11 · PC ESCROW - 6184	0.00	
102.10 · CRP PC - 6192	0.00	
102.12 · WATER RESERVES- 8503	0.00	
102.001 · GL - 9122	46,610.70	
102.04 · DWR - CHECKING	0.00	
101 · LAIF - CASH IN BANK	135,633.10	
101 · LAIF - CASH IN BANK:CIP Deposits 2014	189,000.00	
102.01 · WEST AMERICA - REGULAR CHECKING	88.98	
102.02 · CRP Water - 6990	0.00	
102.03 · CRP Sewer - 3745	0.00	
CUSI Accounts Receivable	204,087.00	
139 · Docufree	36,026.65	
116 · DEFERRED OUTFLOW- PENSION	279,080.00	
103 · PETTY CASH	306.59	
104 · COUNTY TREASURY	85,208.68	
130 · Const In Progress - Studies	691,882.44	
130 · Const In Progress - Studies:130.97 · Const in Progress - Actiflo Pil	3,280.00	
130 · Const In Progress - Studies:130.96 · Const in Progress - WWP 2022	5,585.00	
130 · Const In Progress - Studies:130.95 · Source Capacity Studygrant pr...	18,190.25	
130 · Const In Progress - Studies:130.75 · SCADA	0.00	
132 · CRP SEWER	983,511.67	
132 · CRP SEWER:132.05 · CIP SEWER LABOR	0.00	
135 · CRP WATER	249,148.33	
135 · CRP WATER:135.02 · Aircon Project	0.00	
135 · CRP WATER:135.05 · Backwash Pump Filters #2-#3	0.00	
135 · CRP WATER:135.10 · High Valley Project 2013	0.00	
135 · CRP WATER:135.20 · CIP WATER LABOR	0.00	
111 · INVENTORY - WATER	0.00	
114 · ACCOUNTS RECEIVABLE.	810,005.90	
115 · PRE-PAID INSURANCE	13,571.00	
1890 · ACCOUNTS RECEIVABLE - OTHER	0.00	
12000 · Undeposited Funds	0.00	
136 · CUSI Software	23,172.00	
138 · USDA Water Improvements	8,461,059.57	
128 · Sewer Infrstructure & Rehab Proj	3,890,219.87	
121 · Wtr Dist & Wtr Storage Projects	279,432.11	
121 · Wtr Dist & Wtr Storage Projects:121.1 · Sidewalk Project - District E...	115,500.66	
131 · Waste Water Plant	230,059.50	
131 · Waste Water Plant:131.1 · Pumps/Equipment	178,099.54	
126 · Forcemain (phase 1) Cap. Imprv.	1,233,797.22	
123 · USDA - Sewer Plant Cap Imprvmt	4,265,559.43	
USDA Project		523,819.00
127 · Water Plant	239,426.30	
127 · Water Plant:127.8 · Water Intake Pump Extension		140,267.64
127 · Water Plant:127.7 · Ozone System	38,629.36	
127 · Water Plant:127.6 · Swan AMI Turbiwell Monitor	25,079.10	
127 · Water Plant:127.5 · A/C installation for Filter Rm	750.00	
127 · Water Plant:127.4 · PH System	9,959.72	
127 · Water Plant:127.2 · Harvy Vault Chlor Inject Proj	1,408.61	
127 · Water Plant:127.1 · Major Equipment	396,250.39	
120 · District General CRP	95,883.57	
120 · District General CRP:120.01 · General Equipment/Tools	1,922,818.13	
120 · District General CRP:120.60 · Office	27,331.49	
120 · District General CRP:120.75 · SCADA	54,364.30	
120 · District General CRP:120.90 · Vehicles/Generators/Trailers	934,882.14	
122 · Bldgs/Grounds Cap Improvements	8,547,329.06	

11:26 AM

Clearlake Oaks County Water District

Trial Balance

01/09/25

As of December 31, 2024

Accrual Basis

	Dec 31, 24	
	Debit	Credit
124 · D/C System Cap Improvements	3,150,613.27	
124 · D/C System Cap Improvements:124.2 · GIS Online Mapping System	8,277.92	
124 · D/C System Cap Improvements:124.30 · Lift Stations	60,599.80	
124 · D/C System Cap Improvements:124.30 · Lift Stations:124.31 · Lift St...	66,042.23	
124 · D/C System Cap Improvements:124.50 · Mains	14,788.58	
124 · D/C System Cap Improvements:124.60 · Meters	10,000.34	
124 · D/C System Cap Improvements:124.90 · Water Tanks	40,615.04	
125 · Land - Dist. Cap. Improvements	299,770.00	
129 · ALLOW. FOR DEPRECIATION		11,078,963.62
200 · ACCOUNTS PAYABLE		57,991.56
6748 · Umpqua Credit Card:9264 · Francisco	0.00	
6748 · Umpqua Credit Card:9286 · Jesse	0.00	
6748 · Umpqua Credit Card:8695 · Kurt	0.00	
6748 · Umpqua Credit Card:3530 · Jeremy	0.00	
6748 · Umpqua Credit Card:1172 · Dianna	0.00	
8-81000 · Amazon Business Prime Card		2,108.63
211 · WAB Credit Card:211.18 · WAB - Jesse - 9134	0.00	
211 · WAB Credit Card:211.17 · WAB - Kurt - 0390	0.00	
211 · WAB Credit Card:211.16 · WAB - Francisco - 9149	0.00	
211 · WAB Credit Card:211.15 · WAB - Kurt - 9133	0.00	
211 · WAB Credit Card:211.14 · WAB - Dianna - 5782	0.00	
211 · WAB Credit Card:211.13 · WAB - Jeremy - 9140	0.00	
211 · WAB Credit Card:211.12 · WAB- Francisco - 2481	0.00	
211 · WAB Credit Card:211.11 · WAB - Dan - 2507	0.00	
211 · WAB Credit Card:211.10 · WAB - Dianna - 2473	0.00	
210 · Cal Card	0.00	
210 · Cal Card:210-09 · Cal Card - 5855	0.00	
210 · Cal Card:210-08 · Cal Card - 5848	0.00	
210 · Cal Card:210-07 · Cal-Card	0.00	
210 · Cal Card:210.06 · Cal Card - 3879	0.00	
210 · Cal Card:210.05 · Cal Card - 4075	0.00	
210 · Cal Card:210.04 · Cal Card - 7397	0.00	
210 · Cal Card:210.01 · Cal Card -	0.00	
210 · Cal Card:210.02 · Cal Card 0010	0.00	
210 · Cal Card:210.03 · Cal Card	0.00	
800 · Bulk Water Deposit		2,025.00
Annual Depreciation		249,035.55
224 · USDA Retainage		241,508.65
223.56 · FEDERAL PAYROLL TAX PENALTY	3,928.96	
280 · Loan:280.20 · Crane Truck	6,852.40	
280 · Loan:280.04 · 2021 Water Truck		38,279.97
280 · Loan:280.15 · USDA Water Improvement Project		4,780,000.00
280 · Loan:280.02 · KS State Bank - 2019 Vac-Con	544.49	
280 · Loan:280.12 · USDA Loan for Sewer Clarifier		2,946,172.41
280 · Loan:280.10 · Bridge for I & I Rehab Project	0.00	
280 · Loan:280.07 · Bridge Loan for Forced Main	0.00	
280 · Loan:280.05 · USDA Bridge Loan	0.00	
280 · Loan:280.01 · Kansas State Bk - VACON	0.00	
280 · Loan:280.03 · Kansas State Bk - Camera Traile	0.00	
220 · Restricted - Expansion Fee's	0.00	
221 · Health Ins - EE Portion		10,611.89
221 · Health Ins - EE Portion:221.1 · EE Cobra Payments - Medical	0.00	
222 · Direct Deposit Liabilities		20,551.59
223 · COMP DUMP ACCOUNT	0.00	
223 · COMP DUMP ACCOUNT:223.01 · ADMIN - COMP USED	0.00	
223 · COMP DUMP ACCOUNT:223.02 · SEWER - COMP USED	0.00	
223 · COMP DUMP ACCOUNT:223.03 · WATER - COMP USED	0.00	
223.15 · GARNISHMENTS	22,085.60	
223.15 · GARNISHMENTS:223.16 · GARNISHMENT - COURT DEBT ORDER	134.76	
223.15 · GARNISHMENTS:223.17 · GARNISHMENT - LAKE CO SHERIFF		23,356.51
223.20 · STATE UNEMPLOYMENT TAX PAYABLE	0.00	
223.25 · Vacation Dump Account	0.00	
223.25 · Vacation Dump Account:223.26 · Admin - Vacation Time	0.00	
223.25 · Vacation Dump Account:223.27 · Sewer - Vacation	0.00	

11:26 AM

Clearlake Oaks County Water District

Trial Balance

As of December 31, 2024

01/09/25

Accrual Basis

	Dec 31, 24	
	Debit	Credit
223.25 · Vacation Dump Account:223.28 · Water - Vacation	0.00	
223.30 · Sick Dump Account	0.00	
223.30 · Sick Dump Account:223.31 · Admin - Sick	0.00	
223.30 · Sick Dump Account:223.32 · Sewer - Sick	0.00	
223.30 · Sick Dump Account:223.33 · Water - Sick	0.00	
223.40 · ACCRUED PAYROLL	0.00	
223.45 · FICA & SOCIAL SEC PAYABLE	0.00	
223.50 · MEDICARE TAX PAYABLE	0.00	
223.55 · FEDERAL PAYROLL TAX WITHHOLDING	1,050.73	
223.60 · STATE PAYROLL TAX WITHHOLDING	0.00	
223.65 · STATE DISABILITY PAYABLE	1.00	
2135 · CALPERS RETIREMENT PAYABLE	0.00	
223.70 · WORKERS COMP PAYABLE	0.00	
223.75 · PAYROLL DEDUCTION - INS CO-PAY	25,206.47	
223.80 · GASB 68 Pension		26,313.00
223.85 · MISC DEDUCTIONS PAYABLE		8,934.90
223.90 · COMPENSATED EMPLOYEE BENEFITS		86,839.02
24000 · Payroll Liabilities	19,676.48	
228 · FEMA Interest on Overpaymnt/Pen		743,915.57
227 · FEMA Overpayment/Penalties	2,068,990.59	
295 · NET PENSION LIABILITY		723,163.00
226 · USDA Int Pymnt-Swr Clarifier	0.00	
225 · USDA Payment - Sewer Clarifier	371,172.41	
281 · BOND PAYABLE	0.00	
302 · RETAINED EARNINGS		3,334,114.80
304 · Opening Balance Equity	584,283.24	
306 · Retained Earnings - OLD		16,827,199.65
Income:445 · Bulk Water		4,475.40
Income:410 · Client Reg Pmt		1,311,059.91
Income:420 · Connection Fees		10,245.00
Income:425 · CRP		504,893.37
Income:430 · Penalty & Interest		39,652.91
Income:430 · Penalty & Interest:430.2 · Bank Interest		21,958.68
Income:435 · Loans/Grants:435-11 · Wellness		680.00
Income:440 · Misc Revenue		116.59
Income:450 · Other - Non S/W Rev		144,924.25
Loans/Grants:950 · Wellness	801.06	
Loans/Grants:945 · Wastewater I and I Phase IV	4,297.25	
Loans/Grants:905 · MC WWTP Reclamation	2,152.50	
Salaries & EE Benefits:545 · CALPers 457		125.00
Salaries & EE Benefits:505 · Salaries & Wages	700,200.69	
Salaries & EE Benefits:520 · FICA - District Share	51,079.64	
Salaries & EE Benefits:530 · Med/Life Insurance- Dist Share	109,344.14	
Salaries & EE Benefits:540 · PERS - District Share	96,906.49	
Salaries & EE Benefits:560 · Workers Comp Ins	27,053.10	
Services & Supplies:610 · Bank Fees	22,067.25	
Services & Supplies:620 · Communications & Internet	13,151.50	
Services & Supplies:630 · Equip - Office	1,727.66	
Services & Supplies:640 · Fuel & Oil	23,301.38	
Services & Supplies:645 · Insurance	81,911.45	
Services & Supplies:650 · Interest	57,861.13	
Services & Supplies:657 · Lab	20,920.26	
Services & Supplies:660 · Memberships & Subscription	69,746.87	
Services & Supplies:670 · Postage & Shipping	9,453.56	
Services & Supplies:675 · Professional Services	43,290.94	
Services & Supplies:675 · Professional Services:675-7 · MC On Call Servi...	2,754.00	
Services & Supplies:685 · Rents	4,719.19	
Services & Supplies:690 · Safety & Security	12,021.90	
Services & Supplies:700 · Tools & Instruments	3,355.95	
Services & Supplies:703 · Supplies - Clothing & Personal	6,604.24	
Services & Supplies:705 · Supplies - Office	3,063.85	
Services & Supplies:715 · Supplies-Chemicals-Operating	69,707.25	
Services & Supplies:720 · Supplies - Inventory - Other	33,681.03	
Services & Supplies:735 · Training/Classes/Certs/ClassB	3,774.46	

11:26 AM

Clearlake Oaks County Water District

Trial Balance

01/09/25

As of December 31, 2024

Accrual Basis

	Dec 31, 24	
	Debit	Credit
Services & Supplies:745 · Travel / Lodging	7.00	
Services & Supplies:750 · Utilities	201,114.45	
Services & Supplies:760 · Waste Disposal	29,487.51	
Services & Supplies:795 · Yolo Co	16,594.90	
Services & Supplies:799 · Team Building	1,146.81	
Repairs & Replacement:810 · R&R Buildings & Grounds	3,295.01	
Repairs & Replacement:820 · R&R Lift Stations	3,817.28	
Repairs & Replacement:830 · R&R Equipment	39,898.69	
Repairs & Replacement:830 · R&R Equipment:830.1 · Hydrants	6,143.98	
Repairs & Replacement:832 · R&R Mains and Sewer Lines	12,053.59	
Repairs & Replacement:840 · R&R Vehicles	8,533.51	
45 · ACWA Health Ins (Co Paid)	15.18	
66000 · Payroll Expenses	462.00	
TOTAL	43,903,303.07	43,903,303.07

Account Payable Breakdown

Date: 1/13/2025

	<u>QuickBooks</u>	<u>Balance</u>	<u>Available</u>
General Ledger - 9122	\$82,218.57	\$88,842.71	\$78,137.62
Cal Class CRP Water	\$156,647.31	\$117,991.67	\$117,991.67
Cal Class CRP Sewer	\$144,228.68	\$99,965.75	\$99,965.75
Cal Class CRP PC	\$130,951.02	\$130,951.02	\$130,951.02
Cal Class Water Reserves	\$151,272.65	\$151,272.65	\$151,272.65
Cal Class Sewer Reserves	\$61,886.50	\$61,886.50	\$61,886.50
Cal Class Rest. Funds	\$324,000.00	\$324,000.00	\$324,000.00
LAIF Balance	\$633.10	\$633.10	\$633.10
Current A/P Aging	\$71,129.56	(PG&E Payment Plan for True-Up)	
Kansas State Bank-Water Truck	\$1,730.25	1/20/2025	
Umpqua-Crane Truck	\$3,955.71	1/16/2025	
ACWA Health Ins.	\$21,069.27	1/16/2025	
TOTAL	\$97,884.79		
Paid On-line/Auto Out			
1/9/2025 Amazon Amex Card	\$2,108.63		
1/9/2025 WAB Credit Card	\$118.00		
1/6/2025 Umpqua Credit Card	\$3,105.59		
1/6/2025 PG&E	\$34,471.76		
1/3/2025 Canon Financial	\$1,516.95		
1/2/2025 Bluefin	\$3,980.56		
TOTAL-Paid On-line/Auto Out	\$45,301.49		

8:54 AM

01/13/25

Clearlake Oaks County Water District
A/P Aging Summary
As of January 13, 2025

	<u>Current</u>	<u>1 - 30</u>	<u>31 - 60</u>	<u>61 - 90</u>	<u>> 90</u>	<u>TOTAL</u>
Alpha Analytical Labs	756.00	0.00	0.00	0.00	0.00	756.00
Aqualitec	320.81	0.00	0.00	0.00	0.00	320.81
Badger Meter	129.00	0.00	0.00	0.00	0.00	129.00
Bob's Vacuum	0.00	0.00	0.00	0.00	120.60	120.60
California State Disbursement Unit	269.52	0.00	0.00	0.00	0.00	269.52
Clear Lake Keys POA	144.00	0.00	0.00	0.00	0.00	144.00
Cornelius Finnigan	208.58	0.00	0.00	0.00	0.00	208.58
Glenna Leonhardt	186.65	0.00	0.00	0.00	0.00	186.65
Hasa Inc	5,274.12	0.00	0.00	0.00	0.00	5,274.12
Hayden Solar, LLC	2,457.12	0.00	0.00	0.00	0.00	2,457.12
HC3	1,637.52	0.00	0.00	0.00	0.00	1,637.52
Joanne A. Ruddock	86.94	0.00	0.00	0.00	0.00	86.94
Kelseyville Lumber	83.70	0.00	0.00	0.00	0.00	83.70
Lake County Waste Solutions	850.95	0.00	0.00	0.00	0.00	850.95
MC Engineering, Inc	2,735.70	0.00	0.00	0.00	0.00	2,735.70
Mendo Mill	39.62	0.00	0.00	0.00	0.00	39.62
Miracle Janitorial Service	1,300.00	0.00	0.00	0.00	0.00	1,300.00
Nave Law Office, P.C.	445.00	0.00	0.00	0.00	0.00	445.00
Pace	0.00	114.20	0.00	0.00	0.00	114.20
People Services Inc	130.00	0.00	0.00	0.00	0.00	130.00
PETTY CASH - Hannah Jensen	40.37	0.00	0.00	0.00	0.00	40.37
PG&E	0.00	0.00	0.00	0.00	23,519.80	23,519.80
Redwood Coast Fuels	1,591.37	0.00	0.00	0.00	0.00	1,591.37
Streamline	350.00	0.00	0.00	0.00	0.00	350.00
SWRCB - LW Accounting	18,734.40	0.00	0.00	0.00	0.00	18,734.40
USA BlueBook	0.00	0.00	0.00	1,980.04	1,025.02	3,005.06
William Sedgwick	49.12	0.00	0.00	0.00	0.00	49.12
Yolo County Flood Control	0.00	6,549.41	0.00	0.00	0.00	6,549.41
TOTAL	37,820.49	6,663.61	0.00	1,980.04	24,665.42	71,129.56

CLEARLAKE OAKS COUNTY WATER DISTRICT

NOTICE OF A REGULAR MEETING OF THE BOARD OF DIRECTORS

Date: December 19, 2024

Time: 2:00 P.M.

*Clearlake Oaks County Water District - Administration Building
12952 E. Highway 20, Clearlake Oaks, CA 95423*

MINUTES

A. CALL TO ORDER

- Pledge of Allegiance
- Roll Call

√ Mr. Stanley Archacki, President √ Mr. Michael Herman, Vice President √ Mr. James Burton, Director
√ Mr. William McHugh, Director √ Mrs. Dianna Mann – General Manager, √ Mrs. Olivia Mann – Board Secretary
□ Mr. Francisco Castro, Wastewater, **EXCUSED** √ Mr. Kurt Jensen, Water, □ Mr. Jesse Seth, Operations Manager, **EXCUSED**

B. PUBLIC COMMENT ON ITEMS NOT ON THE AGENDA

The public may comment on items not on the agenda within the Board's jurisdiction. Speakers are limited to three (3) minutes each.

C. STAFF REPORTS

1. Administration
2. Chief Distribution Operator
3. Chief Water Plant Operator
4. Chief Wastewater Plant Operator
5. General Manager

D. COMMITTEE UPDATES

1. Offsite Effluent Storage – Director Herman & Director McHugh
2. Administration Code

E. CONSENT ITEMS

The Board will be asked to approve all Consent Items at one time without discussion. If any Director, staff, or interested person requests that an item be removed from the Consent Items, it will be considered under New Business.

1. **Financial Reports for review and approval**
 - a. November 2024 QB balance sheet and profit & loss statements
 - b. Bank account balances and accounts receivable
 - c. Employee payroll report
 - d. Aged trial balance summary

e. Vendor aging report, accounts payable breakdown

2. **Minutes of the previous meeting for review and approval**

a. Minutes of Regular Meeting 11/21/2024 (*Page 42*)

**Action Taken: Motion to approve the consent items
MCHUGH/HERMAN M/S/C
AYES: ARCHACKI/HERMAN/MCHUGH/BURTON
NOES: NONE
ABSENT: NONE**

F. NEW BUSINESS

1. Administer Oaths to Elected Officials (*Page 45*)

Action Taken: Administered Oath of Office to Director Herman, Director Burton & Director McHugh

2. Nomination of President and Vice President

**Action Taken: Motion to nominate Director Archacki for President and Director Herman for Vice President
MCHUGH/BURTON M/S/C
AYES: ARCHACKI/HERMAN/MCHUGH/BURTON
NOES: NONE
ABSENT: NONE**

3. Discussion and consideration of amendment to Administrative Services Manager Telework Agreement (*Page 48*)

**Action Taken: Motion to approve the amended pages 3-6 of the telework agreement, as shown in the packet
HERMAN/MCHUGH M/S/C
AYES: ARCHACKI/HERMAN/MCHUGH/BURTON
NOES: NONE
ABSENT: NONE**

4. Discussion and consideration to surplus the Ford F-350

**Action Taken: Motion to approve the surplus of the Ford F-350 with a minimum bid of \$4,000.00
BURTON/MCHUGH M/S/C
AYES: ARCHACKI/HERMAN/MCHUGH/BURTON
NOES: NONE
ABSENT: NONE**

- 5. Discussion and approval of transferring \$25,000 from Sewer Reserves and \$30,000 from Water Reserves to GL

Action Taken: Motion to approve the transfer of \$40,000.00 from Sewer Reserves and \$50,000.00 from Water Reserves to General Ledger

BURTON/MCHUGH M/S/C

AYES: ARCHACKI/HERMAN/MCHUGH/BURTON

NOES: NONE

ABSENT: NONE

- 6. Discussion and approval of transferring \$324,000 from the Laif Account to a sub account with California CLASS named USDA Restricted Funds Account. This restricted account is a compliance requirement with USDA for our Clarifier and Water Improvement loans

Action Taken: Motion to approve the transfer of \$324,000.00 from the LAIF Account to a sub account with California CLASS named USDA Restricted Funds Account.

MCHUGH/BURTON M/S/C

AYES: ARCHACKI/HERMAN/MCHUGH/BURTON

NOES: NONE

ABSENT: NONE

G. CLOSED SESSION

Time: 2:51 PM

- 1. Potential Litigation: CLOCWD v. Sparling Instruments, LLC.
- 2. Final Litigation: One Case

Action Taken: In Closed Session, the Board discussed 2 cases of litigation, no action was taken.

H. OPEN SESSION

Time: 3:12 PM

ADJOURNMENT

Time: 3:12 PM

SIGNED: _____ ATTESTED TO: _____
Stanley Archacki, Board President Olivia Mann, Board Secretary

Where appropriate or deemed necessary, the Board may act on any item listed on the agenda, including items listed as information items. Public documents relating to any open session item listed on this agenda that are distributed to all or a majority of the members of the Board of Directors less than 72 hours before the meeting are available for public inspection in the customer service area of the District’s Administrative Office at the above address.

The public may address the Board concerning an agenda item during the Board’s consideration of that agenda item. The President will call for comments at the appropriate time. Comments of individual speakers are limited to three minutes per agenda item.

In compliance with the Americans with Disabilities Act, if you have a disability, and you need a disability-related modification or accommodation to participate in this meeting, then please contact Clearlake Oaks County Water District Secretary to the Board at 707-998-3322. Requests must be made as early as possible, and at least one full business day before the start of the meeting.

CLEARLAKE OAKS COUNTY WATER DISTRICT

RESOLUTION NO. 25-01

A RESOLUTION OF THE BOARD OF DIRECTORS OF CLEARLAKE OAKS COUNTY WATER DISTRICT EXPRESSING APPRECIATION TO SAMUEL BOUCHER FOR HIS OUTSTANDING CONTRIBUTIONS TO THE COMMUNITY AND BOARD OF DIRECTORS

WHEREAS, Samuel Boucher served on the Board of Directors of Clearlake Oaks County Water District from March 28, 2017 to December 1, 2024; and

WHEREAS, Mr. Boucher has provided outstanding service to the District, its employees, and the community during his tenure; and

WHEREAS, Mr. Boucher has been a long-time resident of Clearlake Oaks and has made many significant contributions to the community and governmental affairs; and

WHEREAS, the District wishes to express its appreciation to Mr. Boucher for his distinguished service;

NOW, THEREFORE, BE RESOLVED BY THE BOARD OF DIRECTORS OF CLEARLAKE OAKS COUNTY WATER DISTRICT that Samuel Boucher is hereby recognized, honored, and thanked for his outstanding service on behalf of the community, for his untiring efforts to better the District and community, and for his many thoughtful contributions to the District.

BE IT FURTHER RESOLVED that a certified copy of this resolution be presented to Mr. Boucher by the Secretary along with an appropriate statement of the Board's heartfelt appreciation.

THE ABOVE RESOLUTION is hereby passed and adopted by the Board of Directors of the Clearlake Oaks County Water District at a regular meeting thereof held on the 16th day of January 2025, by the following vote:

ATTEST:

President

Vice President

Board Secretary

Director

General Manager

Director



P. O. Box 1107 Davis, CA 95617

Orders: (530)750-1000

Quote

Clearlake Oaks CWD

12545 Hwy 20
Clearlake Oaks, CA 95423

January 10, 2025

PRICE QUOTE

Prices Valid January 10, 2025 – February 28, 2025

PRODUCT	PACKAGING	PRICE	QUANTITY	AVAILABILITY
Pro Pac 9800	Bulk Tanker Truck	\$0.72/lb/del	4,000 Gallons Minimum	ARO 7 – 15 Business Days

Pro Pac 9800 weighs 11.14 lbs/gal

Please call our office to place all orders at (530) 750-1000

- or -

EMAIL: evie@ntutechnologies.com

This quote supersedes any and all prior quotes